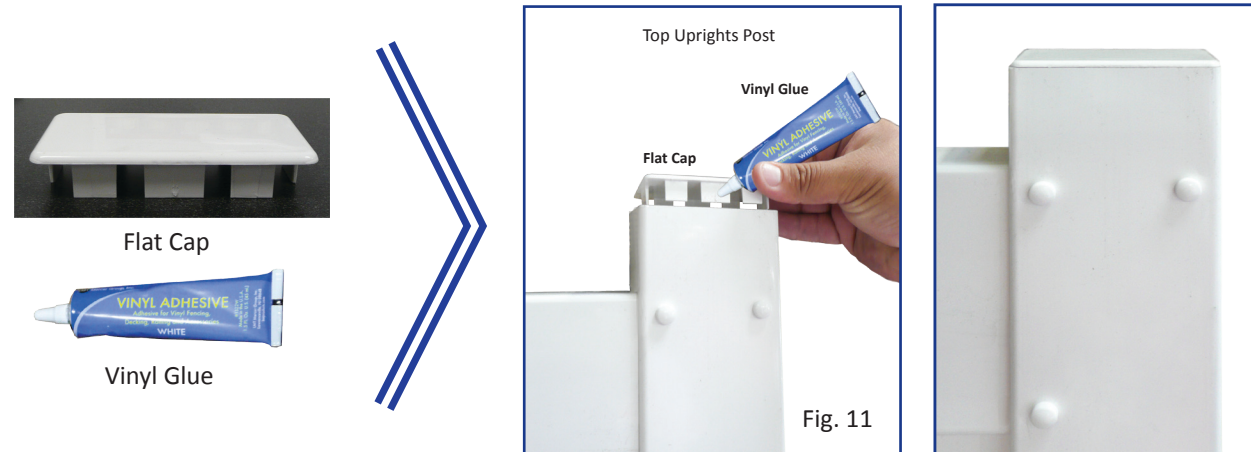




EZ Privacy Gate Kit Assembly Instructions

Step 7 Post Flat Caps Installation



Put a small amount of Vinyl Glue on all sides of the Post Flat Cap and gently tap the Post Flat Cap into the top of the two Uprights Post and wipe off any excess Vinyl Glue with damp cloth (Fig. 11).

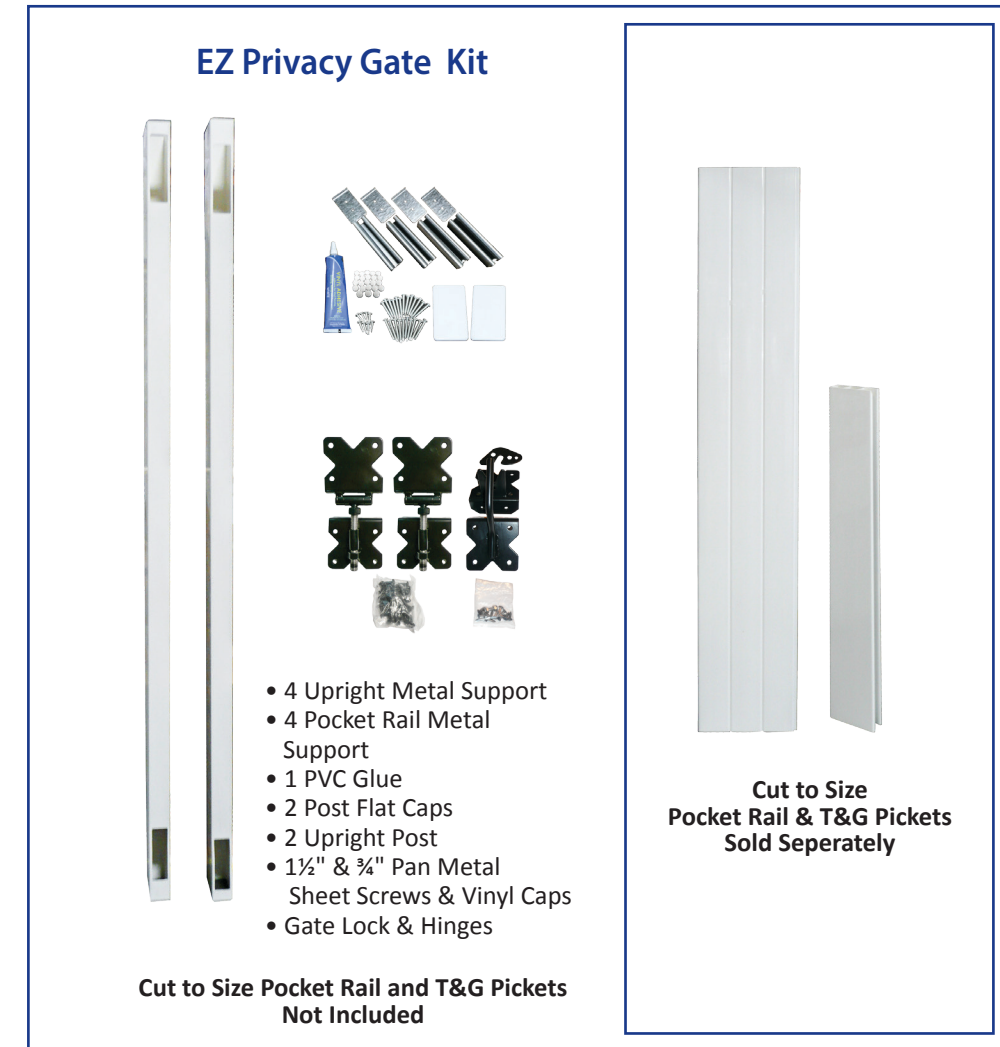
Completed Privacy Gate Kit



USP © 2015



EZ Privacy Gate Kit Assembly Instructions



PLEASE READ INSTRUCTIONS BEFORE ASSEMBLY

During assembly, vinyl components should be laid on a non-abrasive surface (i.e. cardboard or drop cloth) so as not to scratch.

- Use care when applying PVC cement, as it dries quickly. Vinyl should be cleaned with a mild detergent and non-abrasive cleaning pad or sponge.
- Vinyl components should be assembled without using excessive force, to avoid breakage.
- Assemble gate after fence installation, to accurately locate hinge and latch post and proper width size.
- Gates should not be made any wider than 48", to avoid sagging from hinge post.
- All hinge posts properly installed should have steel insert and be filled at least 75% with concrete.
- Cut Top and Bottom rail 2" shorter than distance between hinge and latch post. For Example: If the gate opening is 44" cut Top and Bottom rail to 42".

TOOLS NEEDED

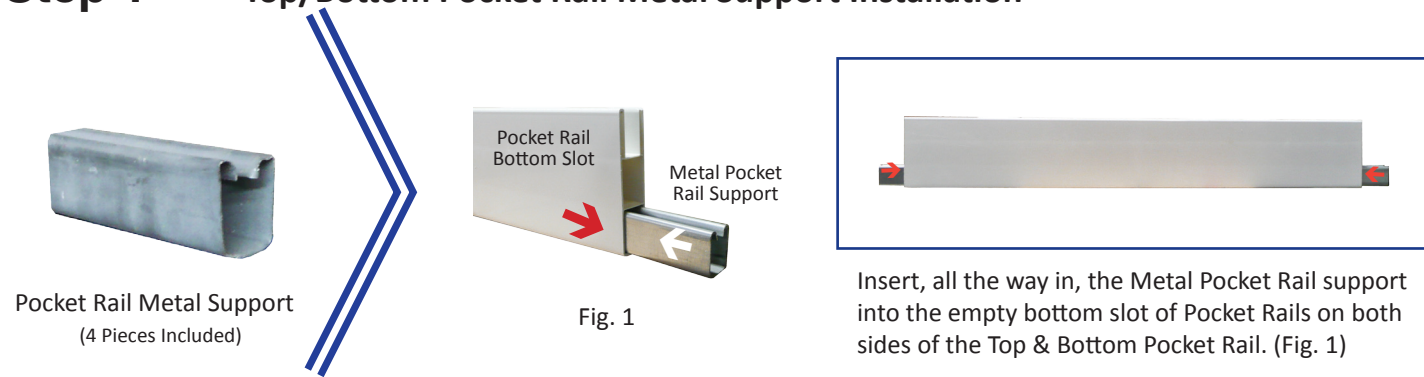
- Measuring Tape / Ruler
- Pencil
- Screw Driver (Phillips #2)
- Drill with 3/16" bits
- Drop Cloth
- Square Level
- Rubber Mallet

Vinyl Fencing Made Easy

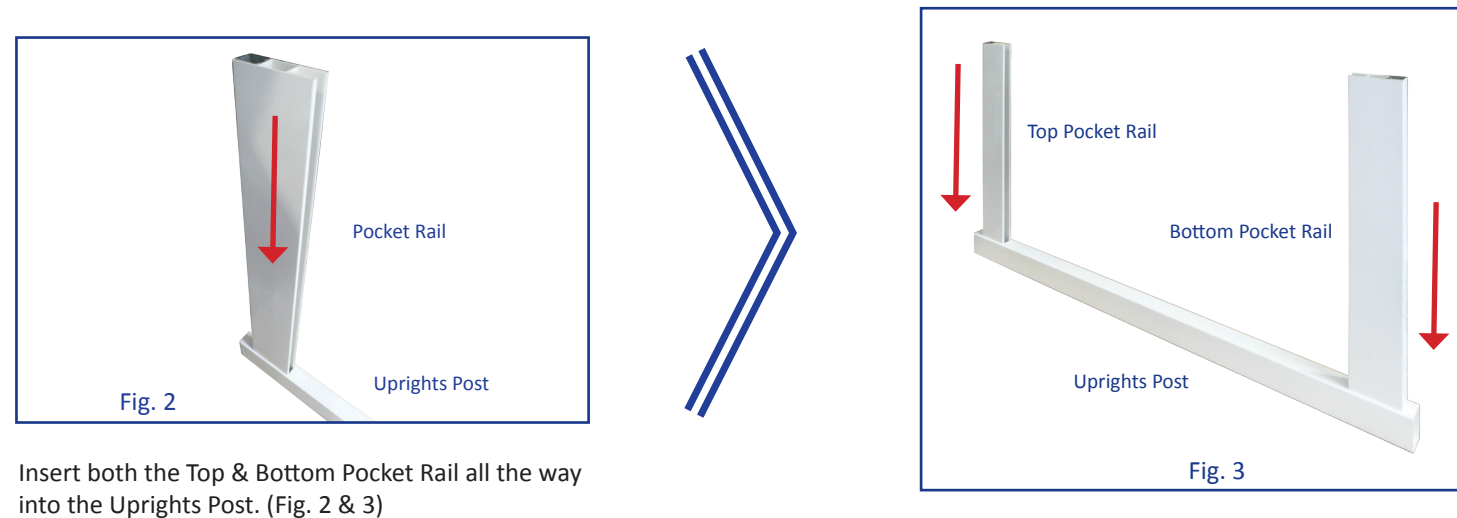
www.ezfencecenter.com



Step 1 Top/Bottom Pocket Rail Metal Support Installation



Step 2 Connecting Pocket Rail into the Uprights Post



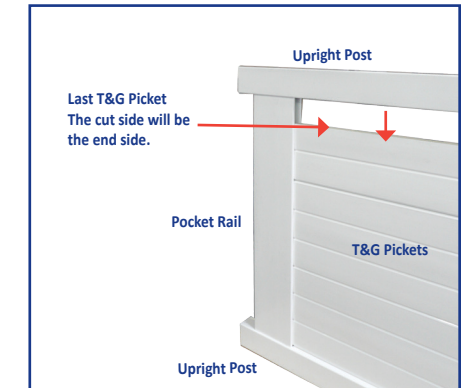
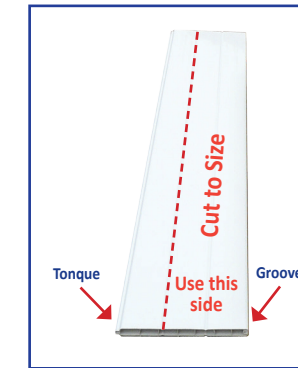
Step 3 Insert the T&G Pickets in between the Top & Bottom Pocket Rail (Fig. 4, 5)



Step 4 Cut to Size the last T&G Picket

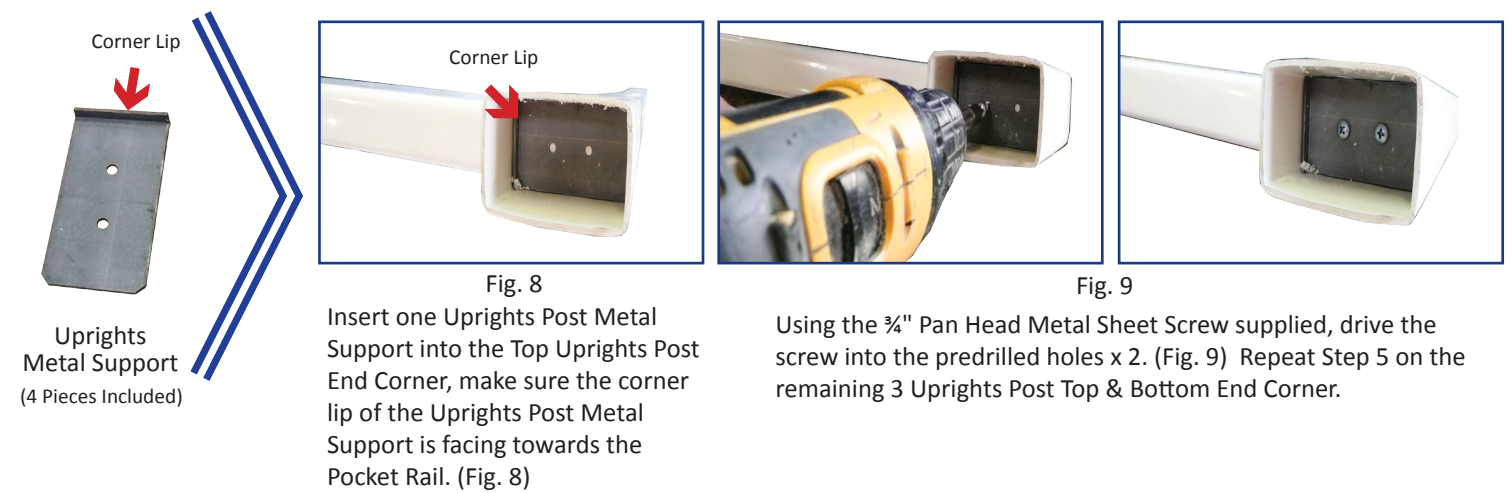
The last T&G Picket **MUST** be cut accordingly to the proper gate size (Fig. 6) before inserting this last T&G Picket then insert the upright post. (Fig. 7)

Last T&G Must be Cut to Size



IMPORTANT: Use a Square Level for all the corners for proper leveling and alignment before doing Step 5.

Step 5 Top & Bottom Uprights Post Metal Support Installation



Step 6 Secure Uprights Post and the Pocket Rail with 1 1/2" Pan Head Sheet Metal Screws

